

CERTIFICATE OF LOCATION OF GOVERNMENT CORNER

North Quarter Corner of Section 35, Township 107, Range 41, 5th P.M.

STATE OF MINNESOTA, County of Murray

At the corner location shown on the sketch:

On Feb 9, 2000 found a 3/4" solid iron 5" below surface
DATE

left monument as found, lowered monument, removed monument (explain)

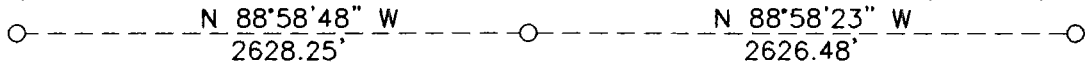
On _____ placed a _____
DATE

SKETCH OF REFERENCE TIES



NW COR NW1/4
SEC 35-107-41
5/8" IRON W/SEAL

NE COR NE1/4
SEC 35-107-41
5/8" IRON W/SEAL



BEARINGS ASSUMED.

Statement of evidence relative to this corner location is on back of page.

I hereby certify that this document and the data contained herein was prepared by me or under my direct supervision.

Lyle C Mosen 2-10-00
SIGNATURE DATE

Registration No. 11943

- Land Surveyor, Professional Engineer
- County Surveyor, County Engineer

OFFICE OF THE COUNTY RECORDER

County of _____

I hereby certify that this document was filed in the Co. Recorders office at _____ .M on the _____ day of _____ A.D. 19 _____

County Recorder _____

By _____, Deputy

DOCUMENT NO. _____

11-6-01-56

Statement of Evidence

On August 6, 1861 L.G.M. Fletcher built a mound with trench pits and a charred stake, midway and on line.

On February 9, 2000 Moseng Land Surveying found a solid 3/4" iron. The iron is 0.20' off line between section corners and within 1' of being midway.